

data sheet

ORACLE DAILY BUSINESS INTELLIGENCE FOR FINANCIALS

Oracle® Daily Business Intelligence (DBI) for Financials empowers managers to stay on top of the critical financial activities of their organization. DBI offers enhanced financial visibility by providing enterprise-wide performance information daily. DBI for Financials enables finance professionals to maximize performance and opportunities, identify potential issues earlier, and address them before they escalate into real problems. Oracle DBI is part of the Oracle E-Business Suite, an integrated set of Information-Driven applications engineered to ensure that the data you capture and create with your business applications is transformed into information that drives competitive advantage.

Gain Timely and Comprehensive Insights into Critical Financial Information

Traditionally, financial analysts have been the keepers of a company's financial information and reports. After the close of each period, financial information would be distributed to executives and managers, usually too late for any action to be taken. In today's fast paced environment, executives, managers and their finance department need timely, detailed financial information at their fingertips in order to make decisions and run their companies more effectively.

DBI for Financials provides a collection of relevant, reliable, up-to-the-day information for your financial reporting needs, providing daily measures such as revenue, cost of goods sold, operating expenses, margin, headcount, and top spenders. Timely access to such information provides executives, managers and their finance department with insights to increase operational efficiencies and take actions proactively to affect financial results prior to period end.

Stay Informed

DBI for Financials allows information consumers to stay on top of daily financial activities. The financials dashboards provide daily, summarized financial information with historical comparison and trends. Information is presented as a set of key performance indicators (KPIs) with supporting graphs, tables, and reports.

Analyze Financial Information

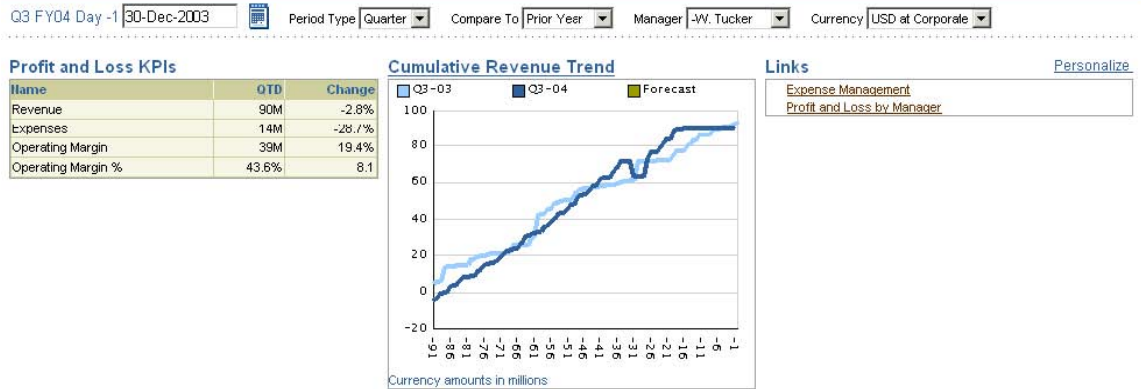
Executives, managers and the finance department not only need the ability to view financial information, but to analyze and identify the root cause of any problems. DBI for Financials allows them to track revenue or expense against budget and forecast and compare with results from prior period or prior year. In addition, they can drill down into the details of accounts receivable, accounts payable, purchasing, fixed assets, and expense reports.

Take Action

DBI for Financials provides finance professionals with the insight to take action based on daily revenue and expense information. The ability to analyze summarized data and drill down to specific transactions help executives, managers and the finance department to quickly identify problems, determine the cause, and take targeted and corrective steps to address these problems.

Stay Informed

Previously, if executives and managers needed to see the consolidated financial numbers prior to period-end, financial analysts had to gather this information from multiple ledgers which required extensive effort. By the time information is compiled, it is often already outdated. DBI for Financials addresses this issue by providing revenue and expense information on a daily basis.

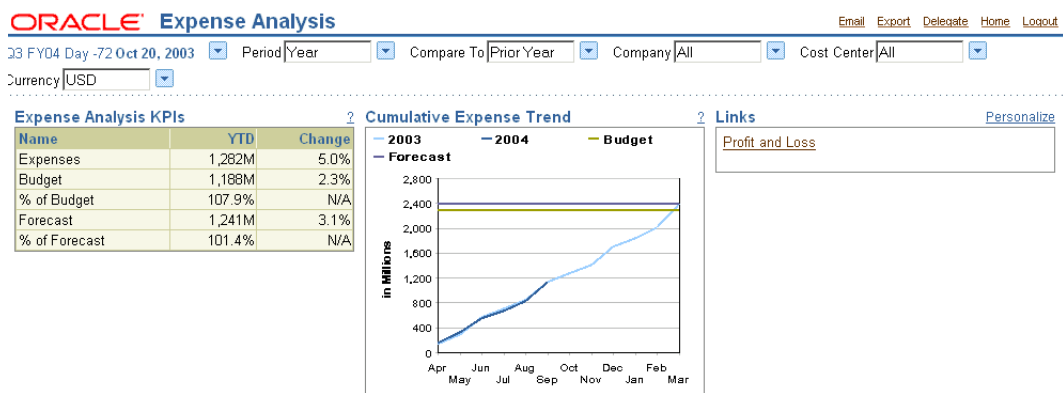


Due to its self service nature and easy to understand tables and graphs, DBI for Financials is relevant to a broad class of information consumers, reaching a much wider audience than conventional solutions. In all the levels of the organization, key players are provided with standardized information securely across the enterprise.

(Figure 1) Profit and Loss Dashboard provides managers with a dashboard view of financials for their organization. Image isn't working

DBI for Financials delivers three main dashboards, Profit and Loss, Expense Management and Expense Analysis:

- The Profit and Loss dashboard (Figure 1) allows executives and managers to track revenue and margin against forecast information across all levels of their manager organization.
- The Expense Management dashboard allows executives and managers to track their operating expenses against budget and forecast across all levels of their manager organization. One highlight of this dashboard is the ability to see the top 10 travel and entertainment spenders and drill down to the actual expense reports. Did you want to include a screenshot of this dashboard?
- The Expense Analysis (Figure 2) dashboard provides finance professionals with expense information across key standard dimensions such as company, cost center, natural account, as well as user defined dimensions.

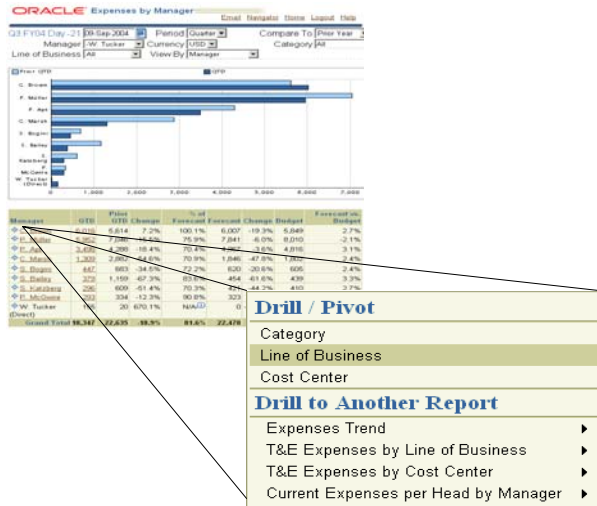


(Figure 2) Expense Analysis Dashboard keeps a finance department informed of their organization's spending.

Analyze Financial Information

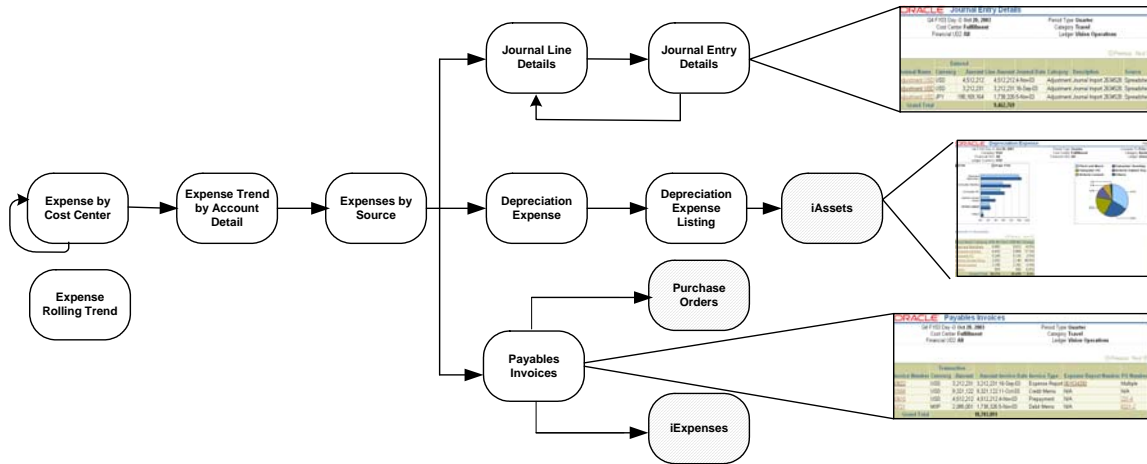
The ability to affect the bottom line is a key objective of any executive, managers or finance departments. DBI for Financials enables users to analyze critical financial information and identify areas where improvement is needed. Viewing trends across weeks, months, quarters or years can quickly uncover anomalies. Comparison against budget

and forecast enables every level in the organization to stay on track with corporate objectives. The ability to drill down to specific transactions from the aggregated numbers allows executives, line managers and the finance department to examine revenue and expenses in detail. The powerful drill and pivot feature (Figure 3) allows quick dissection of data across multiple dimensions.



(Figure 3) The Expenses by Manager report presents spending by managers. The report allows managers to see how their subordinates are tracking against budget and forecast. The drill and pivot feature shows how you can easily switch the view and see the same information by a different dimension.

Access to this type of information empowers executives, managers and the finance department to take more control of spending. The Expense Management dashboard enables executives and managers to view the anomalies in the expenditures and immediately drill down the manager hierarchy to assess which subordinate manager has incurred the expense. Similarly, with Expense Analysis, the finance department can drill to sub-ledger detail and view transactional detail such as the invoice or expense report that caused the anomaly (Figure 4).



(Figure 4) Expense Analysis Dashboard provides drills from summary reports to source transaction details.

Take Action

DBI for Financials not only facilitates information monitoring and analysis, it empowers the executives, managers and their finance department to take action. For example, if revenue shows an unexpected decline, managers can investigate the root cause of the issue. They can drill to a specific line of business, customer, and invoice to identify

the customer event that caused the revenue decline (Figure 5). Knowing the specific transaction, executives and managers can then take the appropriate steps to address the situation.

ORACLE Revenue Detail by Invoice Navigator Home Logout Help

Manager **L. Lang** Currency **USD at Corporate** Category **Revenue**
 Month **Dec 02**

Previous Next 12

Cost Center	Acct	Account Name	Customer	Invoice Number	Invoice Date	Amount
1001637	1001791	Support	AT&T Universal Card	500934	28-DEC-2002	23
1001637	1001791	Support	Computer Service and Consulting	500903	14-DEC-2002	11
1001637	1001791	Support	Computer Service and Rentals	500796	07-DEC-2002	12
1001637	1001791	Support	Total Internet	500924	21-DEC-2002	15
1001637	1001792	Consulting	AT&T Universal Card	500800	07-DEC-2002	29
1001637	1001792	Consulting	AT&T Universal Card	500801	07-DEC-2002	31
1001637	1001792	Consulting	Computer Service and Rentals	500926	21-DEC-2002	34
1001637	1001792	Consulting	Hilman and Associates	500907	14-DEC-2002	53
1001637	1001792	Consulting	Imaging Innovations, Inc.	500932	26-DEC-2002	30
1001637	1001793	Training	A. C. Networks	500911	21-DEC-2002	10
1001637	1001793	Training	Federal Parts	500894	14-DEC-2002	15
1001637	1001793	Training	Imaging Innovations, Inc.	500830	07-DEC-2002	1
Grand Total						22,606

Previous Next 12

Currency amounts in thousands

Links Export Printable Page

(Figure 5) Revenue Detail by Invoice Report allows you to target action on a specific customer's invoice.

On the expense side, Expense Management dashboard provides managers with the ability to take action to reduce expenses. For example, the Top 10 Spenders region allows managers to take control of travel and entertainment expenses by viewing the top 10 spenders in their organization (Figure 6). With the ability to drill down to the underlying expense report, managers can spot exceptions and policy violators, and drive positive cultural change towards prudent spending.

Top 10 Spenders ?

Employee	Direct Manager	Reports Filed	
		2003 Total	Number Filed
A. Debrovner	S. Cruikshank	151,508	5
J. Hendrix	M. Lasher	131,031	7
R. Kelly	A. Bender	122,005	10
D. Shapiro	M. Trotter	99,261	5
B. Ostrin	B. Tucker	33,234	3
S. Roberts	S. Cruikshank	30,131	1
D. DuFour	A. Bender	25,130	2
M. Candace	J. Schnitzer	25,128	2
W. Street	M. Lasher	21,376	5
J. Seelinger	M. Dow	19,739	3
Grand Total		658,543	

ORACLE Expense Reports Return to Portal Logout Preferences

Expense Lines for Expense Report #081534200

Cash and Other Expenses

Receipt-Based Expenses

Line Date	Receipt Amount	Exchange Rate	Expense Type	Justification	Reimbursable							
					Amount (USD)	Expense Group	Adjustment Reason	Receipt Verified	Receipt Missing	Receipt Required	Detail	
1-01-Sep-2003	1,859,256	JPY	0.0085 CR1	Dinner	15,879							
2-06-Sep-2003	847,545	JPY	0.0085 CR1	Hotel	7,147							
3-10-Sep-2003	376,414	JPY	0.0085 CR1	Lunch	3,174							

(Figure 6) Drill from Top 10 Spenders in Expense Management Dashboard allows you to target specific expense reports in Internet Expenses. Image is not working.

Simple Setup

DBI is both straightforward and simple to implement. DBI utilizes existing setups and configuration that have been used in existing Oracle Applications. The result is a streamlined reporting application that can be used almost immediately to provide an enterprise's *daily measurements*.

Drill From Aggregation to Source Transaction

DBI completes the circle from summarized data to granular detail by drilling into the financial transactions that contributed to the key performance measures. This allows users to identify and view the specific transactions that are behind the aggregation to answer any questions that arise.

Configurable and Extensible for your Industry

Decision makers need information that is timely and relevant. With DBI, KPI's and reports can be renamed, hidden, or rearranged on the appropriate DBI Dashboard, tailoring DBI for the needs of your specific industry.. DBI is also extensible, allowing you to create new KPIs and reports, based on both Oracle and non-Oracle data sources. New content added to DBI Dashboards will persist through version upgrades, for maximum ROI and reusability.

Oracle E-Business Suite—The Complete Solution

Oracle E-Business Suite enables companies to efficiently manage customer processes, manufacture products, ship orders, collect payments, and more—all from applications that are built on unified information architecture. This information architecture provides a single definition of your customers, suppliers, employees, and products—all aspects of your business. Whether you implement one module or the entire Suite, Oracle E-Business Suite enables you to share unified information across the enterprise so you can make smarter decisions with better information.

KEY FEATURES

Stay Informed

- View daily revenue and expense information at every level of management
- Standardize information at every level in the organization
- Gauge daily performance with Key Performance Indicators
- Easy to understand data via graphs and tables

Analyze Financial Information

- Analyze revenue and expense information in detail and against budget and forecast
- Perform detailed analysis using several filtering parameters
- Observe trends over time periods of weekly, monthly, quarterly or yearly
- Compare performance today with the prior period or same period year ago
- Monitor information across multiple dimensions like company, cost center, manager, line of business, financial category, or user defined

Take Action

- Make informed decisions in near real time

- View top 10 spenders in your organization
- Drill to detail on Internet Expenses to see policy violators
- Drill to detail on receivables and payables invoices
- Drill to Purchase Order for payables invoices
- View detail assets information by major and minor asset categories
- Drill to iAssets to see actual asset information

Drill from Aggregation to Source Transaction

- Start with the high level, aggregated data and drill into the most granular level – the transaction
- Identify which specific transactions contributed to the key performance indicators
- Complete the full cycle from summary to detail

Daily Business Intelligence for Financials Key Performance Measures

Measures enable you to monitor trends for key objectives

- | | |
|--|---|
| <ul style="list-style-type: none"> • Revenue – View the total amount of revenue entered in general ledger. Based on the accounts mapped to the revenue financial category • Expenses – View the total amount of expenses entered in general ledger. Based on the accounts mapped to the expense financial category • Budget – View the total of budget expenses. Based on the accounts mapped to the expense financial category • % of Budget – Measures what percentage of budget has been utilized • Operating Margin – Measures difference between Revenue and Cost of Goods Sold and Operating Expenses • Operating Margin % – Determines the rate of operating margin compared to revenue | <ul style="list-style-type: none"> • % of Forecast – Measures what percentage of forecast has been utilized • Forecast vs. Budget – Shows difference between forecast expenses less budget expenses divided by budget expenses • Expenses per Head – Assess expense per employee • T&E per Head – Assess the amount of travel and entertainment expenses per employee • Headcount – Measures the headcount for the logged in manager’s organization |
|--|---|

Financials Reports

Reports enable you to assess revenue, and expense information

- | | |
|--|--|
| <ul style="list-style-type: none"> • Revenue Summary – Displays actual, budget, and forecast revenue for the selected time period. You can view this report by cost center, line of business, financial category or manager • Cumulative Revenue Trend– Displays the cumulative revenue for the period-to-date compared to the forecasted revenue • Revenue Trend – Displays 12 months of revenue activity for the current and prior year • Revenue by Sales Channel – Displays revenue broken down by Sales Channel (Only available if Oracle Receivables and Order Management are implemented) • Revenue by Product – View revenue broken down by product • Revenue by Category Detail – Displays revenue broken down by financial category • Revenue by Journal Source – Displays revenue broken down by journal source, such as receivables, manual journal entries, or other sources • Revenue Detail by Invoice – Displays revenue broken down by invoice within receivables (only available if Oracle Receivables is implemented) • Gross Margin Summary – Displays the delta between revenue and cost of goods sold for actual, budget and forecast for the selected time period • Operating Margin Summary – Displays the difference between revenue, cost of goods sold and operating expenses for actual, budget, and forecast for the selected time period • Cost of Goods Sold Summary – Displays actual, budget, and forecast cost of goods sold for the selected time period. | <ul style="list-style-type: none"> • Cost of Goods Sold Detail by Invoice – Displays cost of goods sold broken down by invoice within payables (only available if Oracle Payables is implemented) • Expense Summary – Displays actual, budget, and forecast operating expenses for the selected time period. You can view this report by cost center, line of business, financial category or manager • Expense Trend – Displays 12 months of operating expenses activity for the current and prior year • Expense by Category Detail – Displays operating expenses broken down by financial category • Expense by Journal Source – Displays operating expenses broken down by journal source, such as payables, manual journal entries, or other sources • Expense Detail by Invoice – Displays operating expenses broken down by invoice within payables (only available if Oracle Payables is implemented) • T&E Expense Trend – Displays the historical trend in T&E expenses • Expense Report Listings – Displays information about an employee’s expense reports for the period. Only expenses approved in the Payables workflow are displayed • Expense Report Inquiry – Displays detailed information for a specific expense report (only available if Oracle Internet Expenses is implemented) • Expenses per Head – Displays expenses per employee by manager • Headcount and Expenses Trend – Displays headcount and operating expenditures for the selected time period • Top 10 Spenders – Displays expenses reported using |
|--|--|

<ul style="list-style-type: none"> • Cost of Goods Sold Trend – Displays 12 months of cost of goods sold activity for the current and prior year • Cost of Goods Sold by Category Detail – Displays cost of goods sold broken down by financial category • Cost of Goods Sold by Journal Source – Displays cost of goods sold broken down by journal source, such as payables, manual journal entries, or other sources • Expenses by Cost Center – Displays actual, budget, and forecast operating expenses for the selected time period. You can view this report by cost center, company, financial category or user defined dimension. • Revenue by Cost Center - Displays actual, budget, and forecast revenue for the selected time period. You can view this report by cost center, company, financial category or user defined dimension • Expense Trend by Account Detail – Displays monthly, quarterly or yearly operating expense trend broken down by company, cost center and natural account • Revenue Trend by Account Detail – Displays monthly, quarterly or yearly revenue trend broken down by company, cost center and natural account • Expense Rolling Trend - Displays 12 month rolling trend of operating expenses activity for the current and prior year • Revenue Rolling Trend - Displays 12 month rolling trend of revenue activity for the current and prior year • Cumulative Expense Trend – Displays the cumulative operating expense for the period-to-date compared to the budget and forecasted expenses 	<ul style="list-style-type: none"> • Oracle Internet Expenses of top ten employees, ranked by total expenses per employee, who incurred expenses in the department of the manager selected (only available if Oracle Internet Expenses is implemented). • Employee Directory – Displays information, from the Oracle Human Resources Employee Directory, about an employee (only available if Employee Directory is implemented) • Expenses by Source - Displays operating expense amount, grouped by the ledger and transaction source of where the transaction originated from • Revenue by Source - Displays revenue amount, grouped by the ledger and transaction source of where the transaction originated from • Payables Invoices – Displays detail listing of invoice headers that are applicable to a specific company, cost center and natural account (only available if Oracle Payables is implemented) • Journal Entry Details - Displays detail listing of manual journal headers that are applicable to a specific company, cost center and natural account • Journal Line Details - Displays detail listing of manual journal lines that are applicable to a specific company, cost center and natural account • Depreciation Expense Major Categories - Displays listing of assets grouped by major categories (only available if Oracle Assets is implemented) • Depreciation Expense Minor Categories - Displays listing of assets grouped by minor categories (only available if Oracle Assets is implemented) • Depreciation Expense Listing - Displays listing of assets that are applicable to the selected major and minor asset categories (only available if Oracle Assets is implemented)
--	--

Oracle Corporation
World Headquarters
500 Oracle Parkway
Redwood Shores, CA 94065
USA

Worldwide Inquiries:
650.506.7000
Fax: 650.506.7200
<http://www.oracle.com>

Oracle Corporation (Nasdaq: ORCL) is the world's leading supplier of software for information management, and the world's second largest independent software company. With annual revenues of more than \$10.1 billion, the company offers its database, tools and application products, along with related consulting, education, and support services, in more than 145 countries around the world.

Features and screen shots shown may not correspond exactly to the released product.

Oracle is a registered trademark of Oracle Corporation.

All other company and product names mentioned are used for identification purposes only and may be trademarks of their respective owners.

Copyright © 2005 Oracle Corporation
All Rights Reserved

Last Updated: 2005

